



**Professor Richard John**

Program Leader Griffith Science Education Alliance

Program Leader Science on the GO!

Griffith School of Environment

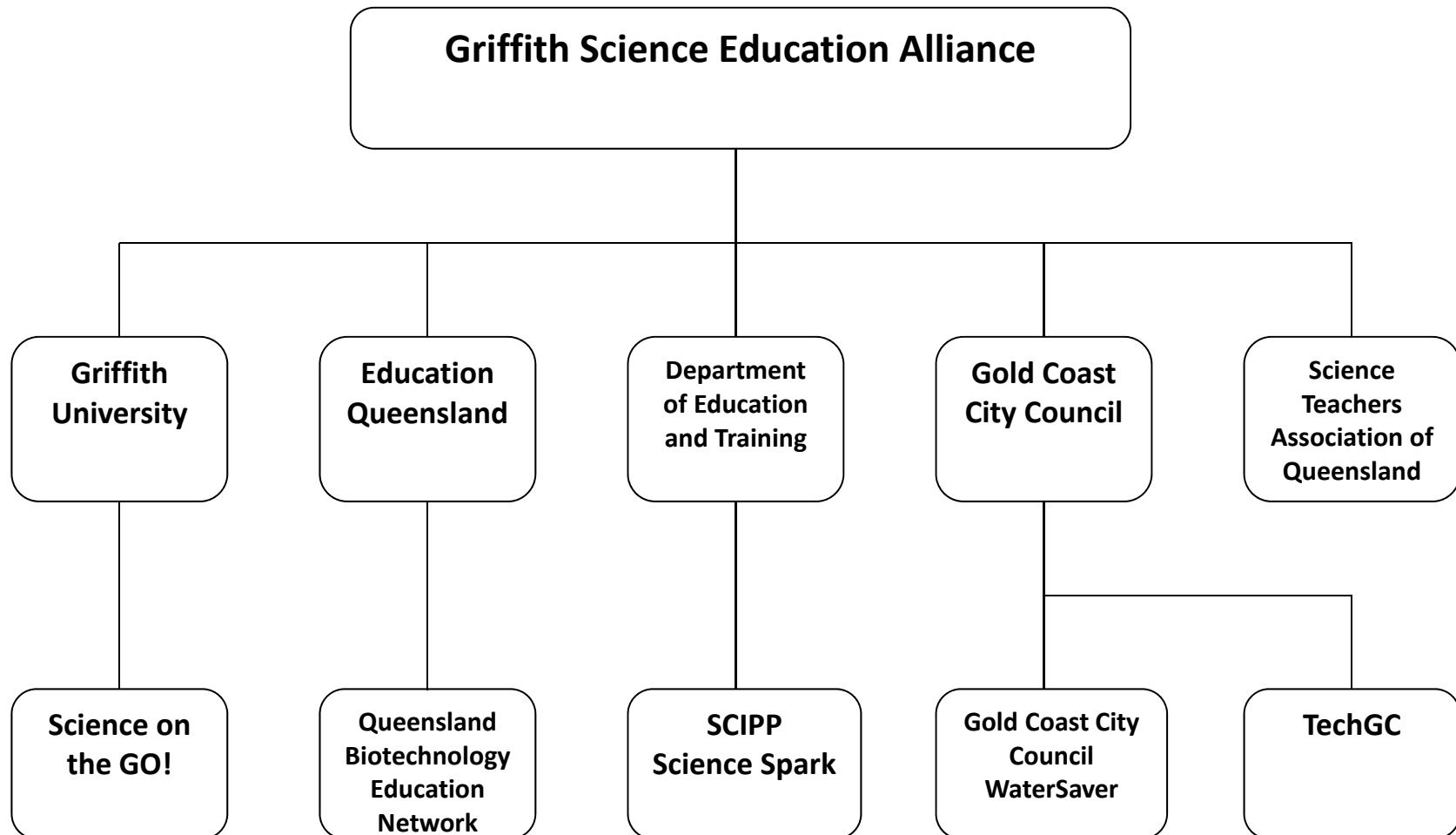
Science, Environment, Engineering and Technology Group

Griffith University



# Griffith Science Education Alliance

Program Leader: Associate Professor Richard John



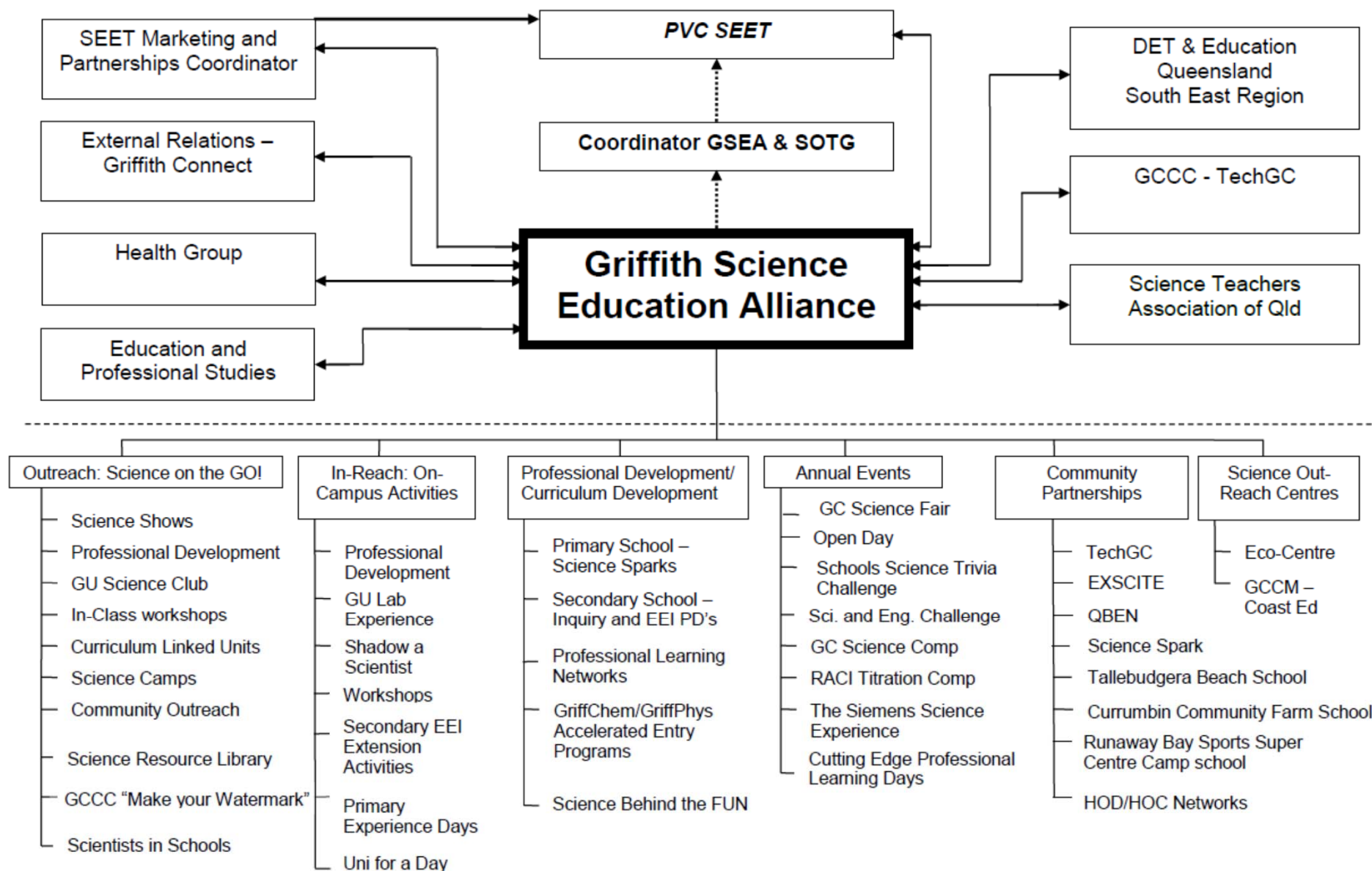


## Goals of the Griffith Science Education Alliance:

to raise general awareness and interest in science and science studies leading to increased enrolments at senior secondary and tertiary levels

to assist individual teachers and school cluster groups to develop common programs, with a prescribed quality, that could be used at a number (if not all) schools across the Griffith corridor

to provide a coordinated region-wide approach to science education with visible Griffith involvement in the development and delivery of these programs, thus establishing a clear link (and pathway!) between school science studies and tertiary science studies





## Achievements to date

Over the past six years the GSEA gained financial support and personnel from its partner organisations to host a range of initiatives and programs.

» total funding associated with these programs is in excess of \$4.2 million

» some of these programs include

- Science Education Partnership (Spotlight on Science)
- Southern Science Centre for Innovation and Professional Practice (SCIPP) (2006-2009 Science Strategy)
- Science Spark program (2010-2012 Science Strategy)
- Connecting with Science program (AGQTP and DET)
- Make Your Watermark Program (GCCC)



## Engagement and Impact

In excess of 120 000 students, teachers and members of Gold Coast public have been engaged in GSEA activities over last five years

Includes more than 5500 hands-on teacher professional development engagements in the South East Region

The demand for SEET places (1<sup>st</sup> preferences) at the Gold Coast campus has risen 51% since 2006 (compared with a 13% increase across the entire University, 29% for the Gold Coast Campus and 9.4% for SEET programs at Nathan)

Overall result: an annual increase of 17% in actual science enrolments

In 2011, 52% of 1<sup>st</sup> year undergraduate SEET students surveyed at the Gold Coast campus experienced GSEA/SOTG activities during high school;

68% of these students indicated that these experiences influenced their decision to enrol at Griffith.

# Awards/Recognition



- STAQ medal for Excellence in Science Education (2006) – Science Teachers Association of Qld
- Qld-Smithsonian Fellowship (2007) –Premiers Dept Qld Govt
- Peter Doherty Institute Award for Excellence in Science Education (2008) – DET Qld Govt
- RACI Award for Excellence in Chemistry Education (2008) – Royal Australian Chemical Institute
- Griffith Award for Excellence in Teaching (2006) – Griffith University
- Griffith SEET Group Service Award (2008) – Griffith University
- ASTA Award for Service to Science Education (2009) – Australian Science teachers Association
- Education Qld Showcase Award (Academic Excellence) (2010) – for our “EXSCITE” program
- B-HERT Entrepreneurial Educator of the Year Award (2011)
- B-HERT Award for Best Community Partnership